

Blanco Management Console

A complete centralized data erasure and reporting solution.

Blanco Management Console is designed to help manage IT asset disposal processes, including erasure software distribution, hardware asset management, and erasure reporting for auditing purposes.



Time and money saved through increased productivity



Value of assets maximized through remarketing

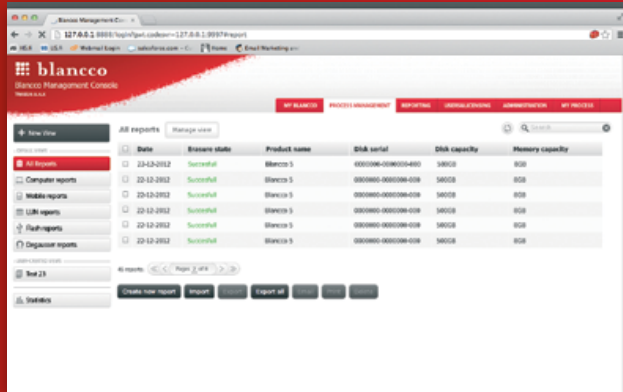


Peace of mind through enhanced security



Easy-to-use lifecycle management





Blancco Management Console

This new generation Blancco Management Console is a complete centralized data erasure and reporting solution.



Advanced reporting and auditing features



Centralized storage of erasure reports for audit trail



Seamless integration with existing AMS/ERP systems*



Simple erasure policy management



Easy and integrable user administration

* Asset Management System & Enterprise Resource Planning

TECHNICAL SPECIFICATIONS

CENTRALIZED PROCESS MANAGEMENT:

- Web service interfaces (API) for seamless integration with existing AMS/ERP systems
- Complete online management of the data erasure process
- Remote erasure control (including status monitoring)
- Full automation requiring minimum user interaction
- Built-in role management and unlimited user hierarchy

REPORTING:

- Comprehensive data erasure reports and statistics
- Full hardware and software details recorded (including over 250 hardware specifics)
- Easy report importing, exporting, emailing and validating
- Reports available in CSV, PDF and XML formats
- Fast and user friendly report searching
- Add user-created reports for nonfunctioning assets

AUDITING:

- Compliant (legal) erasure evidence
- Comprehensive asset and chain of custody tracking
- Full transparency of the erasure process

ACCESS CONTROL AND USER MANAGEMENT:

- Extensive database support
- Easy user management, also including support for Active Directory
- Customizable user rights
- Assignment of functional groups (operation manager, operator, auditor, etc)
- Built-in erasure license management

LANGUAGE SUPPORT:

- English, French, German, Japanese, Russian and Spanish
- Support in other languages will be available soon. Please ask your Blancco sales representative for details.

MINIMUM HARDWARE REQUIREMENTS:

- Dual Core processor or better
- 2-4 Gb RAM or better
- Network Interface Card
- Display
- Keyboard and mouse
- Free USB port
- Java Runtime Environment 1.6.0 or greater (OS independent)