

Ibas - Kroll Ontrack

World leading data recovery experts standing next to you!

GIGANTTI

GIGANTEN

ELKJOP 

ibas  **Kroll Ontrack**[®]

When you need us, we're there for you!

DATA RECOVERY



Ontrack® EasyRecovery



Save photos, music, videos, mail and documents that are deleted unintentionally or become unavailable when formatting or software failure.

Note: Does not recover for physical errors, like a typical clicking noise.

➤ **Protect** your data saved on Hard Disk or SSD storage with proactive monitoring feature based on S.M.A.R.T. scan

➤ **Recover** your data from VMware® Virtual Environments (Enterprise Edition)



In-Lab Data Recovery Service

Knowhow responsibility

- **Inform** the customer about the in-lab service

<http://www.ibas.no/drc/elkjop/>

- **Assist** customers with online registration step-by-step
- **Complete** order form and email to recovery@ibas.no
- **Charge** for the analysis
- **Ship** to Ibas



Bestilling av "Economy" analyse In-Lab Data Recovery

Utfyllt skjema sendes pr. e-post til recovery@ibas.no. Originalen vedlegges enheten.

1. Oppdragsgiver/fakturaadresse

Navn:	<input type="text"/>		
Adresse:	<input type="text"/>		
Postnummer:	<input type="text"/>	Sted:	<input type="text"/>
Telefon:	<input type="text"/>	E-post:	<input type="text"/>
Mobil:	<input type="text"/>	Telefaks:	<input type="text"/>

2. Elkjøp butikk

Navn:	<input type="text"/>		
Adresse:	<input type="text"/>		
Postnummer:	<input type="text"/>	Sted:	<input type="text"/>
Telefon:	<input type="text"/>	Kontaktperson:	<input type="text"/>

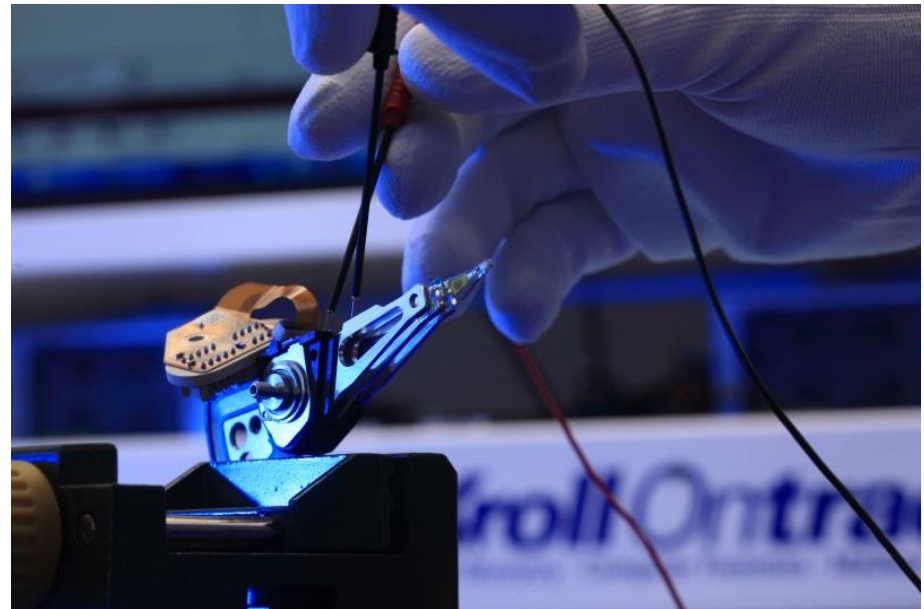
3. Leveringsadresse

Navn:	<input type="text"/>		
Adresse:	<input type="text"/>		
Postnummer:	<input type="text"/>	Sted:	<input type="text"/>
Telefon:	<input type="text"/>		

In-Lab Data Recovery Service

Ibas responsibility

- **Receive and register** the order from Knowhow
- **Guide** the customers throughout the process
- **Return** recovered data to the store/customer
- **Pay** commission to Elkjøp Nordic every quarter



In-Lab Data Recovery Service Pricing

Target customers

- Home users
- Company customer?
 - Call for quote



Pricing Home Users

- Windows: Fixed prices, see local website
- Mac: Fixed prices, see local website

When you need us, we're there for you!

DATA ERASURE



Erase Software Tools

PC / server erase

A high speed, efficient and flexible total erasure solution for hard disks in desktops, laptops, servers and storage environments that enables safe disposal and reuse.

Mobile erase

Secure mass erasure of Android, iOS and Windows smartphones and tablets.

Flash erase

Erase flash media storage devices stored within smartphones, tablets, network routers, and cameras etc



Hosted Erase – Your concept

ibas  Kroll Ontrack[®]

Agenda

➤ What is Hosted Erase?

➤ How does it work?

- The Administration & Flow
- The Client function & interface
 - Erase

➤ Example Setup

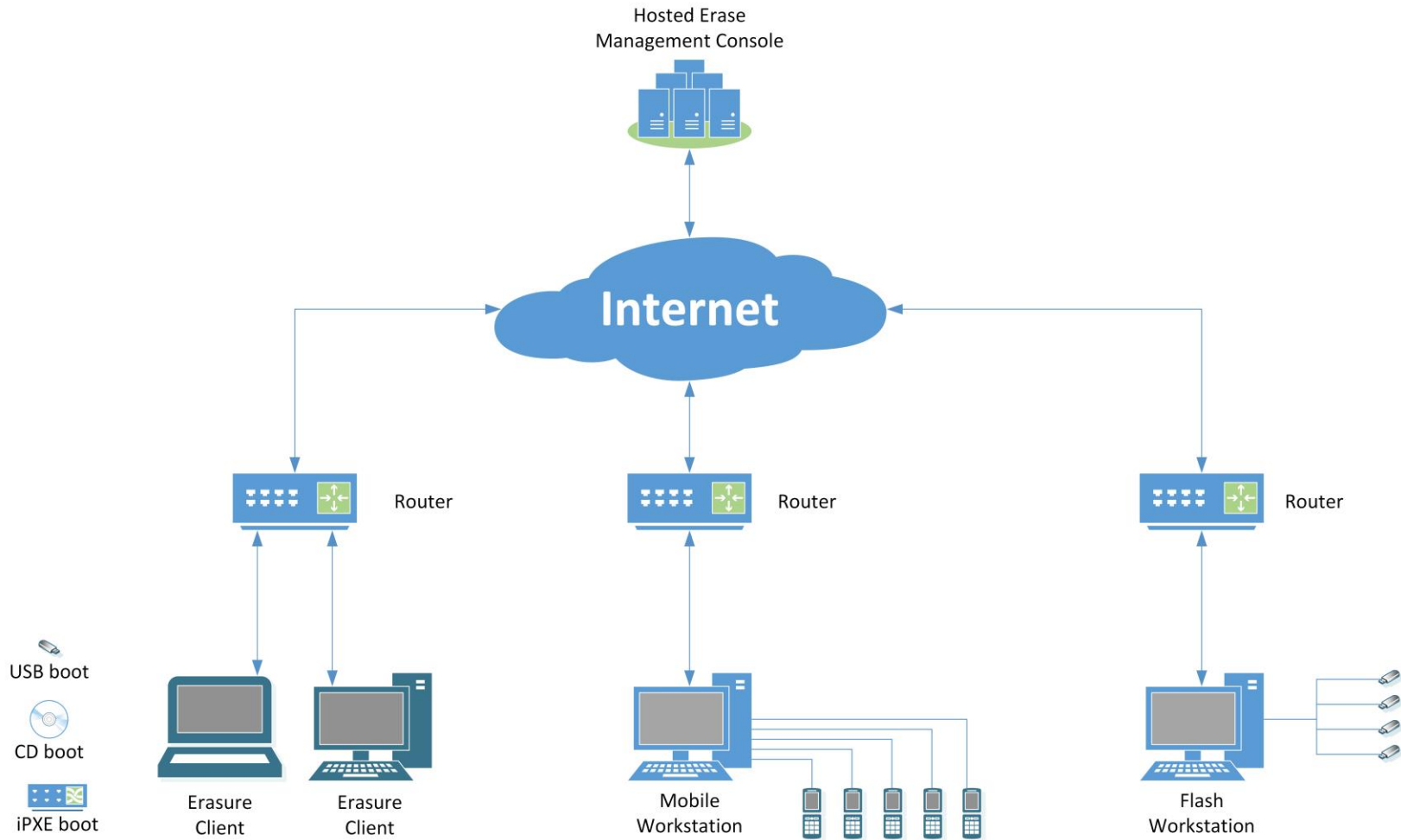
- Centralized
- Stores

➤ Support

➤ Demo

➤ Q & A

How does it work flow



How does it work – Mobile Erase

- Performing erasure requires a mobile client to be installed on the device. Connecting the mobile unit to this PC enables the user to perform erasure of the unit (up to 30 units sametime).
- Erase availble for iOS, Android and Windows Phone.
- Separate erase report can be created.

How does it work – PC erase & diagnostics

- An erase client/image is loaded on the PC/server containing the data to be erased.
 - Diagnostics:
 - Automated tests – no interaction is required by the user
 - Assisted tests – interaction required (f.ex. testing volume keys).
 - Erase:
 - Automated erase – no interaction is required by the user
 - Assisted erase – interaction required (f.ex. additional information added to the report).
- Combined diagnostic and erase report.

Support

➤ Support

- Phone Support: + 47 62 81 01 00
- Email Support: fi-support@krollontrack.com

Demo

➤ **How does it work?**

- » Setup
- » Erase mobile units
- » Erase hard disks
- » Erase flash

More Information

- Norway: <http://www.ibas.no/drc/>
- Denmark: <http://www.ibas.dk/drc/>
- Finland: <http://www.ibas.fi/drc/>
- Sweden: <http://www.ibas.se/drc/>

The screenshot shows the website for ibas Kroll Ontrack. The header includes the logo and navigation links: Kontakt oss, Referanser, Support, Nyheter, and Om Ibas. A secondary navigation bar lists services: Data Recovery, Datasletting, Computer Forensics, Ontrack PowerControls, and ediscovery. Social media icons for Facebook and Twitter are also present. The main content area shows a breadcrumb trail: Forside → DRC → Elkjøp. The page title is 'Elkjøp DRC'. Below the title, there is a section titled 'Her kan du laste ned dokumentasjon.' followed by a link for 'EasyRecovery 11 Software'. A list of downloadable documents is provided, including 'In-Lab rutine', 'bestillingsskjema', 'Quick Guide Clinic', 'Ibas Data Recovery Clinic', 'EasyRecovery 6.2 User Guide EN', 'Product Guide EasyRecovery 10', 'Quick Guide OES', and 'Quick Guide Recovery'.

Quiz

- Quiz: Kahoot.it
- Name of quiz: **Fix@FirstTime**
- The quiz will be public from may 30th.