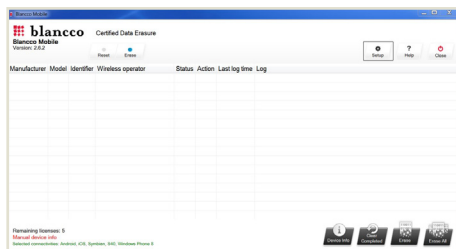


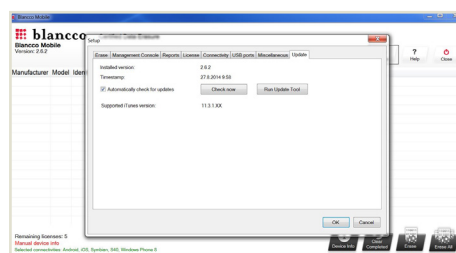
Blanco Mobile Settings for Ontrack Hosted Erase

There are few steps that should be taken after program installation before starting the erasures.

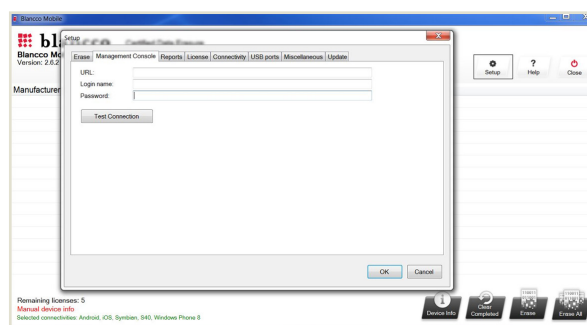
First start the program and go to the setup:



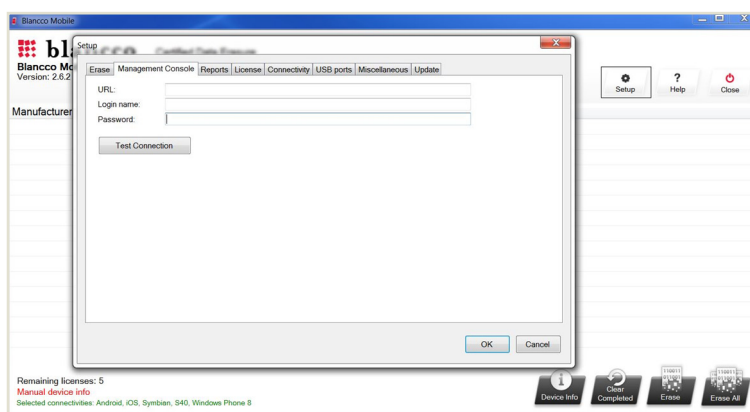
Go to the last tab "Update" and check for the updates, and if found, run the update:



- After update and reboot start the program and go to the setup again.
- Go to the second tab "Management Console"
- Enter the full Ontrack Hosted Erase url address to the "URL:" field: **https://www.hostederase.com**
- Enter the "Erase User" username and password from the account info pdf document into the related fields. (Due to the complexity of username and password a copy-paste is recommended).
- Click the "Test Connection" button to verify settings.



- Go to the fourth tab "License" and choose "Management Console"



The required settings are now done and you can start erasing the devices.

Other settings are optional and can be done at user's discretion.

Before starting please take a look what's behind the "Help" button: It includes full User Manual, Quick Start Guide and several process description guides for different phone types.

For more information visit us online:

www.ibas.no | www.ibas.se | www.ibas.dk | www.ibas.fi