

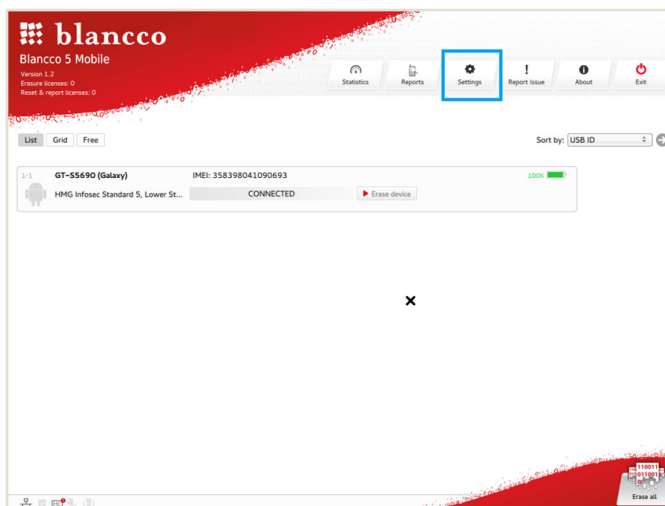
Blancco Mobile 5 settings for Ontrack Hosted Erase

NOTE:

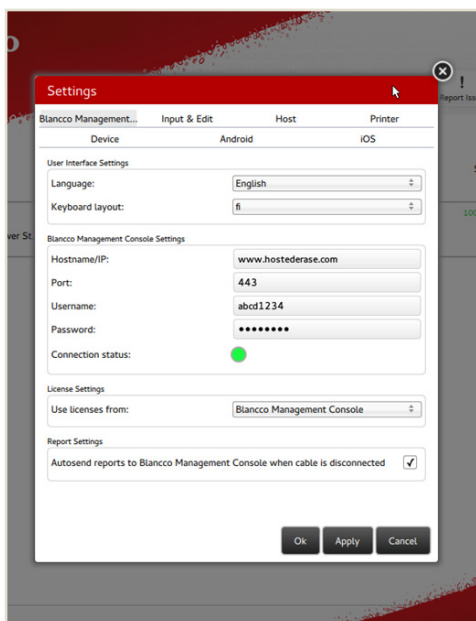
If Blancco 5 Mobile is started from USB – dongle these settings has to be done every time the computer is booted.

If Blancco 5 Mobile is started from permanent installation these settings needs to only be done once.

Once Blancco 5 Mobile has started go to the **Settings:**



On the first tab “Blancco Management Console, fill in the following fields:



Language	Use the preferred local settings
Keyboard layout	Use the preferred local settings
Hostname/IP	www.hostederase.com
Port	443
Username	Use the username from the account document
Password	Use the password from the account document
Use licenses from	Blancco management Console

- Tap the “autosend reports to...”
- Once all the settings are correctly set and applied, the “Connection Status” –symbol changes to Green.
- Settings on others taps are optional and can be done at user’s discretion.
- It is recommended to go through all settings on permanent installations.

For more information visit us online:

www.ibas.no | www.ibas.se | www.ibas.dk | www.ibas.fi