

A Better Way to Search and Restore SharePoint Items

Ontrack® PowerControls™ software for Microsoft® Office SharePoint® Server is an easy-to-use, yet extremely powerful tool that allows SharePoint and IT administrators to efficiently search and restore items from a SharePoint database.

Imagine having a car with a flat tire and the only way you could repair it was by completely rebuilding the vehicle. Or, envision spilling coffee on your living room carpet and being told that you will need to replace the entire floor. Considering the small amount of damage in these scenarios, the remedies suggested seem ridiculous.

SharePoint administrators can face a similar scenario – where a seemingly simple problem requires a painful, time-consuming solution. In this case, the problem is the need to efficiently restore individual items, lists, libraries and folders back to a production SharePoint server or to another file system. This granular level of restoration is necessary to meet a variety of IT requests.

- **Administrative needs** – such as SharePoint site consolidation or reorganization
- **Internal business needs** – such as locating and restoring documents that meet specified criteria
- **Data recovery needs** – due to accidental deletion or emptying of the recycle bin; or due to a SharePoint server outage

Ontrack PowerControls for SharePoint is designed to make granular restoration of SharePoint items or entire sites a much faster and easier process. By eliminating the need to restore the entire SharePoint site, just to recover a few items, Ontrack PowerControls makes it simple for an administrator to locate exactly the items they need and copy and export those items back into the production SharePoint environment or to an alternate location. When SharePoint sites need to be consolidated, Ontrack PowerControls allows you to simply drag and drop an entire site into an alternate location.



Restore SharePoint Items in Less Time, for Less Cost

Fully restoring a SharePoint site from a previous backup or from a snapshot can be a time-consuming and expensive process. You can restore the full backup directly to your production SharePoint server, which eliminates the need and expense of a recovery server – but that may take several hours and could make the server inaccessible for some time.

By directly reading your existing content database backups, and allowing you to find and restore only the items you need, Ontrack PowerControls for SharePoint saves you significant time and eliminates the need for a recovery server.

Alternatively, you could set up a recovery server that mirrors the configuration of the production SharePoint server and then restore the whole site to that server. However, servers are costly and the added expense of the necessary hardware seems exorbitant when all you need to do is search for and recover or export a few crucial items. Additionally, it is time-consuming to properly set up the recovery server.

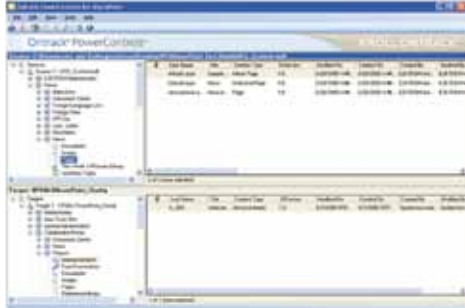
Ontrack PowerControls for SharePoint gives you a much better option for restoring individual items, lists, libraries and folders.

Eliminate Same-Site Restore Constraints

Many SharePoint backup and recovery programs only allow you to restore the data to the same or a duplicate server. Ontrack PowerControls does not have this constraint. Restore items directly to a production SharePoint server, another SharePoint server or to a file system.

Spend Less Time Searching

SharePoint and IT administrators are often asked to locate and restore documents that meet certain criteria. Whether for business needs such as finding and restoring all documents



and items related to a recent product launch; or for an IT need, such as consolidating SharePoint sites – the need to quickly locate and restore SharePoint items is one of the more common needs faced by SharePoint administrators.

Ontrack PowerControls for SharePoint meets this need by providing an Advanced Find feature that can search across all content databases in an archived SharePoint file, rather than bringing an old backup or snapshot back online for analysis. Search by numerous criteria - including item type, keywords, subject, dates, specified users, and file/attachment data.

Maintain Data Integrity

When requests for SharePoint data restoration arise due to a legal or compliance matter, it can be critical to keep the metadata of restored items intact. Ontrack PowerControls does not change the metadata of the SharePoint source or target and maintains data integrity by performing read-only operations on the source files. It will not alter data when accessing the target and maintains metadata integrity throughout the restoration process.

Reduce Risks and Keep Your Backup Processes Intact

Ontrack PowerControls runs on a Windows®-based workstation, does not install on your SharePoint server, and requires no complicated pre-installation configurations of SharePoint or Microsoft® SQL Server®. Keep your backup process and your SharePoint environment exactly the way it is today.

The user interface utilizes a simple, intuitive design that makes it easy to learn and use with just minimal training. Moving SharePoint items from a source into a target location is as simple as drop-and-drag or copy-and-paste.

The Bottom Line

As more organizations utilize Microsoft Office SharePoint Server for document management and collaboration, the need for an efficient data restoration tool has never been greater. Ontrack PowerControls meets this need by reducing the time and cost required to restore individual SharePoint items, lists, libraries and folders, or full sites, and eliminating the need for a recovery server. In the end, the ROI your organization recognizes using Ontrack PowerControls for SharePoint will easily justify your purchase.

Ontrack PowerControls System Requirements

To connect and use Ontrack PowerControls software, you need the following hardware and software:

One of the following operating systems:

- Windows® XP Professional
- Windows Server® 2003
- Windows Server® 2008 Standard
- Windows Server 2008 Data Center
- Windows Server 2008 Enterprise
- Windows Vista® Business
- Windows Vista Ultimate
- Windows Vista Enterprise

The operating systems listed above are required to have the latest service packs installed. 32-bit and 64-bit versions of the above operating systems are supported

Additional Requirements:

- Microsoft® .NET Framework 3.5
- Intel® Pentium® compatible processor
- Internet Explorer 8
- 1024 MB RAM minimum
- 200 MB of free hard disk space for the installation (more disk space will be needed for processing log files when opening an MDF file)
- Monitor with 800 x 600 or higher screen resolution
- USB port (for Ontrack PowerControls product licenses requiring HASP key dongle to run application)

Note: Ontrack PowerControls supports Microsoft® Office SharePoint® Server 2007 and Microsoft® Office SharePoint® Server 2007 SP1 data stored on SQL Server® 2005 or SQL Server® 2008)

The following virtual environments are supported:

- VMware® Server 1.x, v2.x
- VMware® ESX or ESXi
- VMware® Workstation v6.x for Windows
- Microsoft® Virtual Server 2005 R2
- Microsoft® Hyper-V™
- Microsoft® Hyper-V Server 2008
- Microsoft® Virtual PC 2007

Virtual operation of tape devices may have restrictions imposed by virtual operating systems. HASP key operation is validated in environments that support USB attached devices and support the Kroll Ontrack distributed HASP drivers only.



Norman Ibas Oy
Läkkisepäntie 11
00620 Helsinki
Puh. (09) 2727 210
ibas@norman-ibas.fi
www.ibas.fi

Copyright © 2009 Kroll Ontrack Inc.
All Rights Reserved.

Kroll Ontrack, Ontrack PowerControls and other Kroll Ontrack brand and product names referred to herein are trademarks or registered trademarks of Kroll Ontrack Inc., and/or its parent company, Kroll Inc., in the United States and/or other countries. All other brands and product names are trademarks or registered trademarks of their respective owners.